



**** PART EXCHANGE AVAILABLE ** ** DOUBLE GARAGE ****

**** Mortgage subsidy scheme £150 a month for 24 months paid on completion ****

With four spacious bedrooms, the Southwark is the perfect home for the modern family. The light and airy front lounge sports a feature bay window, while a fantastic open-plan kitchen/dining/family space makes up the rear of the house. From here, bifold doors open up the space even more, leading out into the rear garden. Meanwhile, the ground floor also features an attractive study space that's ideal for remote working.

On the first floor, the Southwark features a beautiful master bedroom with a fitted wardrobe and an en-suite bathroom, as well as three further bedrooms. There is also a generous family bathroom and a downstairs cloakroom, as well as a HIVE smart meter.

Elder Brook Park, Neasham Road, DL2 1DL

LOUNGE

13'7" x 11'0" (4.14m x 3.35m)

KITCHEN/DINING/FAMILY AREA

23'4" x 16'6" (7.11m x 5.03m)

STUDY

7'6" x 7'2" (2.29m x 2.18m)

UTILITY

7'3" x 5'5" (2.21m x 1.65m)

DOWNSTAIRS CLOAKS/W.C

FIRST FLOOR

MASTER BEDROOM

13'4" x 11'0" (4.06m x 3.35m)

EN-SUITE

6'9" x 4'10" (2.06m x 1.47m)

BEDROOM TWO

11'0" x 8'11" (3.35m x 2.72m)

BEDROOM THREE

9'10" x 9'0" (3.00m x 2.74m)

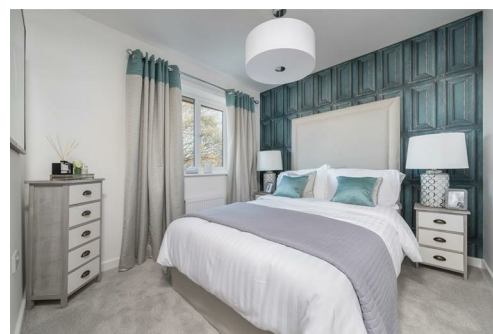
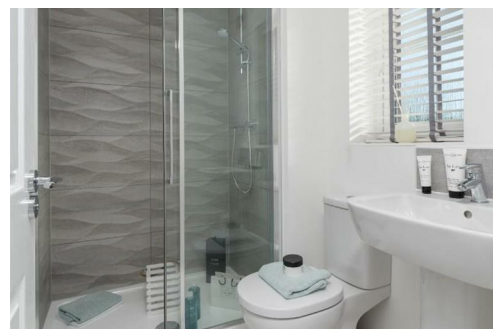
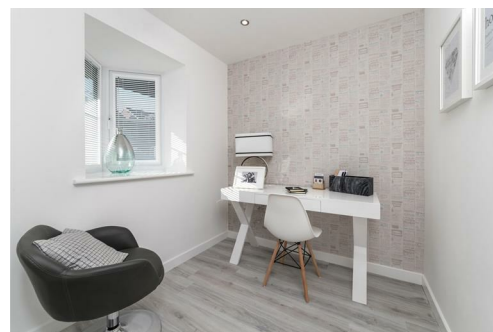
BEDROOM FOUR

12'2" x 7'6" (3.71m x 2.29m)

BATHROOM

6'11" x 5'7" (2.11m x 1.70m)

FRONT EXTERNAL



Every care has been taken with the preparation of these particulars, but they are for general guidance only and complete accuracy cannot be guaranteed. If there is any point, which is of particular importance please ask or professional verification should be sought. All dimensions are approximate. The mention of fixtures, fittings &/or appliances does not imply they are in full efficient working order. Photographs are provided for general information and it cannot be inferred that any item shown is included in the sale. These particulars do not constitute a contract or part of a contract. Robinsons can recommend financial services, surveying and conveyancing services to sellers and buyers. Robinsons staff may benefit from referral incentives relating to these services.

